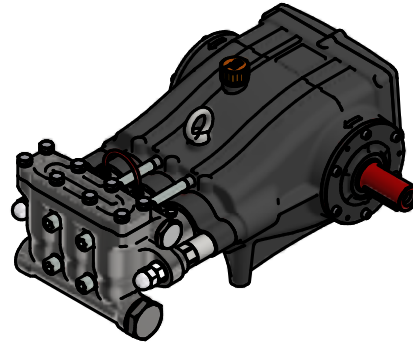
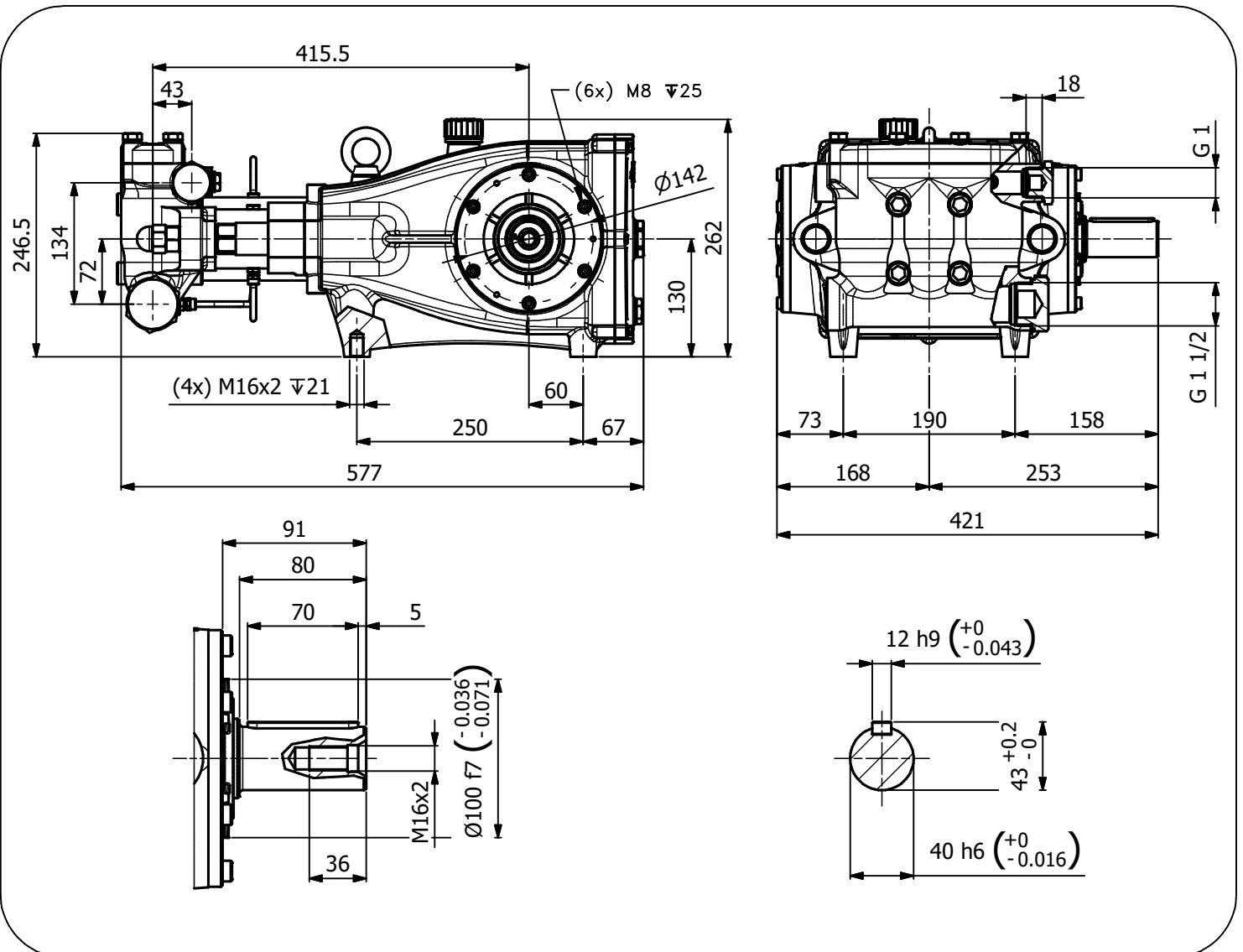


| Pump Pompa | Pressure Pressione | | Volume Portata | | | | RPM giri/min | | Power Potenza | | | |
|---------------|-----------------------|------|-------------------|-------|-------|-------|-----------------|-------|------------------|-------|-------|-------|
| | | | l/min | | GPM | | | | HP | | kW | |
| | bar | PSI | 50 Hz | 60 Hz | 50 Hz | 60 Hz | 50 Hz | 60 Hz | 50 Hz | 60 Hz | 50 Hz | 60 Hz |
| GXT1015SHT | 150 | 2175 | 100 | 120 | 25,8 | 31 | 1000 | 1200 | 38,0 | 45,6 | 28,0 | 33,6 |
| GXT1215SHT | 150 | 2175 | 120 | 144 | 31,3 | 37,6 | 1000 | 1200 | 46,5 | 55,8 | 34,2 | 41,0 |
| GXT1513SHT | 130 | 1885 | 150 | 180 | 39,2 | 47 | 1000 | 1200 | 50,6 | 60,7 | 37,2 | 44,6 |
| GXT1711SHT | 110 | 1595 | 170 | 204 | 44,9 | 53,9 | 1000 | 1200 | 47,5 | 57,0 | 35,0 | 42,0 |

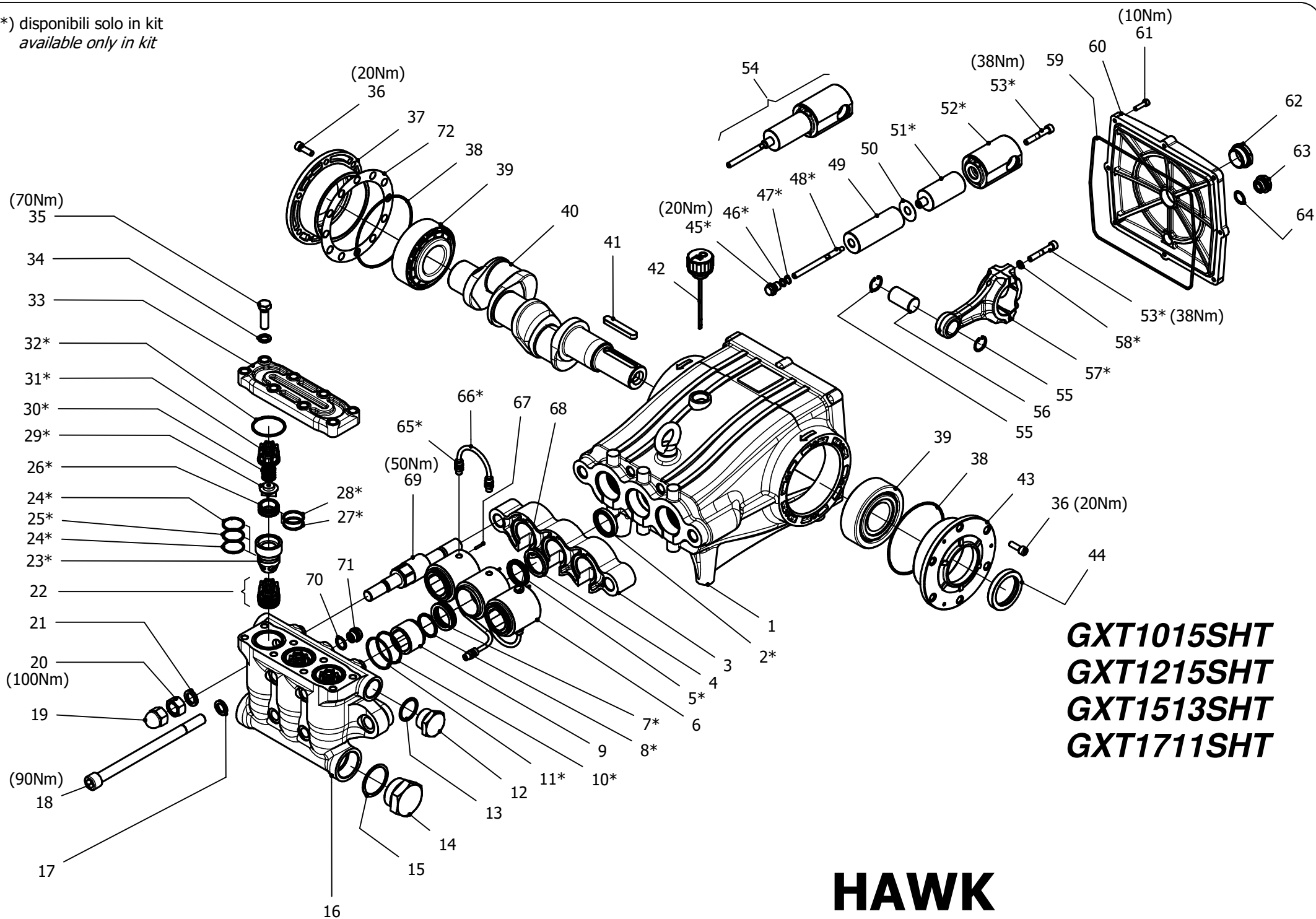


Dimensioni d'ingombro

Overall dimensions



(*) disponibili solo in kit
available only in kit



GXT1015SHT
GXT1215SHT
GXT1513SHT
GXT1711SHT

HAWK
serie **GXT HT 2017**

GXT HT SERIES 2017

ORDINARY MAINTENANCE KIT / KIT MANUTENZIONE ORDINARIA

| KIT | Item - Pos | Part Number - Codice | Description | Descrizione | Q.TY per pump - Q.TÀ per pompa | GXT1015SHT | GXT1215SHT | GXT1513SHT | GXT1711SHT |
|-----|--|----------------------------|-------------------------|-------------------------|---|------------|------------|------------|------------|
| A | 5-7-8-9-10 11 | 9.853-354.0 | PISTON SEAL PACKING Ø36 | GUARNIZIONI PISTONE Ø36 | 1 | | | | |
| B | 22 (26-27 28-29-30 31) 24-25 32 | 1.904-471.0 | VALVE | VALVE | 1 | • | • | • | • |

EXTRAORDINARY MAINTENANCE KIT / KIT MANUTENZIONE STRAORDINARIA

| KIT | Item - Pos | Part Number - Codice | Description | Descrizione | Q.TY per pump - Q.TÀ per pompa | GXT1015SHT | GXT1215SHT | GXT1513SHT | GXT1711SHT |
|-----|---|----------------------------|----------------------------|--------------------------|---|------------|------------|------------|------------|
| C | 45-46-47 49-50 | 1.904-473.0 | PLUNGER Ø36 | PISTONE Ø36 | 3 | | | | |
| D | 38-44-59 62-63-64 | 1.904-474.0 | KIT CRANCKASE SEALS | KIT TENUTE CARTER | 1 | | | | |
| E | 17-18-19 20-21 | 1.904-472.0 | MANIFOLD SCREWS | VITI TESTATA | 1 | | | | |
| F | 45-46-47-48 50-51-52 53-54-55 56-57-58 | 1.904-475.0 | PLUNGER ROD-CONNECTING ROD | ASTA PISTONE-BIELLA | 3 | • | • | • | • |
| G | 65-66 | 1.904-477.0 | COMPLETE CIRCULATION PIPES | TUBI RICIRCOLO | 1 | | | | |
| H | 22 (26-27 28-29-30 31) 23-24 25-32 | 1.904-470.0 | COMPLETE VALVE | VALVOLE COMPLETE | 1 | | | | |
| I | 2 | 1.904-478.0 | PLUNGER OIL SEALS | TENUTE OLIO ASTA PISTONE | 1 | | | | |

“Q.TY per pump” => Necessary quantity to repair one pump
 “Q.TA’ per pompa” => Quantità necessaria per riparare una pompa

IMPORTANT

IMPORTANTE

* Part available ONLY in kit
 Disponibile SOLO in kit

(...) Parts pre-assembled
 Parti pre-assemblate

TOOL KIT

| <i>Part Number Codice</i> | <i>Description</i> | <i>Descrizione</i> | <i>Q.TY by Pump Q.TÀ per Pompa</i> | <i>GXT1015SHT</i> | <i>GXT1215SHT</i> | <i>GXT1513SHT</i> | <i>GXT1711SHT</i> |
|-------------------------------|-----------------------------|-------------------------|--|-------------------|-------------------|-------------------|-------------------|
| 1.905-635.0 | TOOL-KIT | TOOL-KIT | 1 | | | | |
| 1.905-636.0 | OIL SEAL EXTRACTOR TOOL-KIT | TOOL-KIT ESTR. PARAOLIO | 1 | • | • | • | • |



